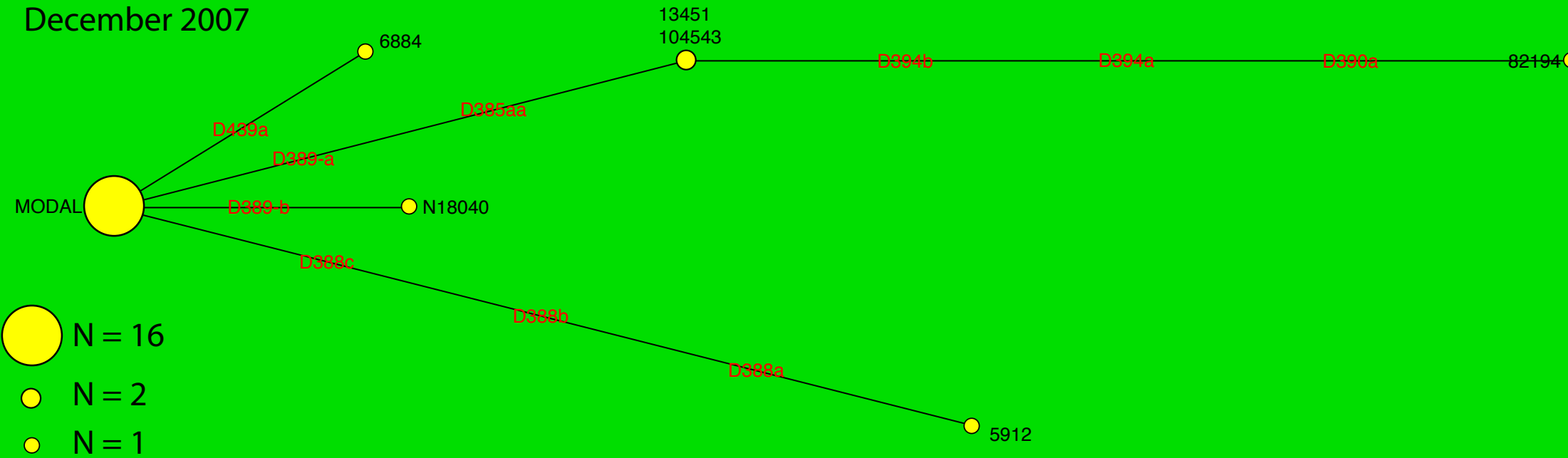


Pyle(s)/Pile(s) Network Diagram:  
12 markers, haplogroup I1a  
22 haplotypes  
December 2007



	3	3	1	3	3	3	4	3	3	3	3	3	#			
	9	9	9	9	8	8	2	8	3	8	9	8	8			
MODAL contains haplotypes	3	0		1	5	5	6	8	9	9	2	9	9			
5364					a	b							B			
5368									1		2					
5369	13	22	14	10	14	14	11	14	11	13	11	29	(16)	16	Modal	0
6919	13	22	14	10	14	14	11	14	11	14	11	30	(16)	1	N18040	1
6SHXD (from DNA heritage)	13	22	14	10	14	14	11	14	10	13	11	29	(16)	1	6884	1
N12050	13	22	14	10	14	14	11	11	11	13	11	29	(16)	1	5912	3
28200	13	22	14	10	14	14	11	14	11	12	11	28	(16)	1	13451, 104543	2
58962	13	22	14	10	14	14	11	14	11	12	11	28	(16)	1	82194	4
74599	13	22	14	10	14	14	11	14	11	12	11	28	(16)	1		
75683	13	22	14	10	14	14	11	14	11	12	11	28	(16)	1		
82300	13	22	14	10	14	14	11	14	11	12	11	28	(16)	1		
83055	13	23	16	10	14	14	11	14	11	12	11	28	(16)	1		
94510																
95683																
95790																
98006																

modal value ±1 modal value ±2 modal value ±3 modal value

NB: for 389-1, 389-2, an allele pair of (14,30) or (12,28) is considered a G.D. of 1 from (13,29); 12 and 14 are both a G.D. of 1 from 13, and 389B = 389-2 minus 389-1, so 30-14 = 29-13 = 28-12 = 16. Fluxus software uses 389-1 and 389B to calculate G.D.